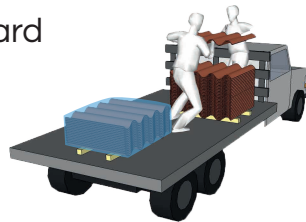


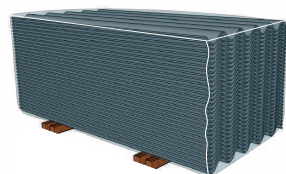
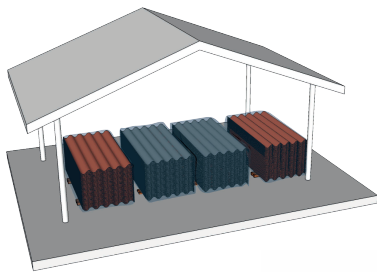
Handling

- The boards should be always transported manually by two people.
- Avoid hitting the boards and support them at the corners.
- Transport the one board at a time.



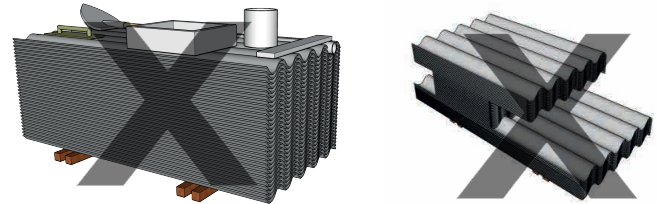
Protection

- Place the product on a flat, firm and level surface.
- Store them indoors with their respective protective bag (colored board) in order to protect them from the sun and damage.
- The protection must be maintained until the moment of installation.
- Do not forget to protect and maintain always the pallets with a waterproof mantle until the installation.



Stacking

- Do not store boards of different sizes on the same pallet, or store other materials on top of the pallets.



- For corrugated boards packaging, the following maximum stacking quantities should be considered:

PLYCEM EUREKA ROOFING- P10

MAXIMUM NUMBER OF PANELS PER PALLET	
N°	Units per pallet
3, 4, 5, 6, 7, 8, 9	100
10	60
11, 12	50

PLYCEM EUREKA ROOFING- P7

MAXIMUM NUMBER OF PANELS PER PALLET	
N°	Units per pallet
3, 4, 5, 6, 7, 8, 9	120
10	110
11, 12	60

PLYCEM EUREKA ROOFING - SEVILLANA

- In the packaging of Sevillana Roofing boards, each pallet should have a maximum of 40 boards of the same length.