



IMPACT
RESISTANT



LIGHTWEIGHT



PLAGUE
RESISTANT



WEATHER
RESISTANT



NON
COMBUSTIBLE



EASY TO
INSTALL



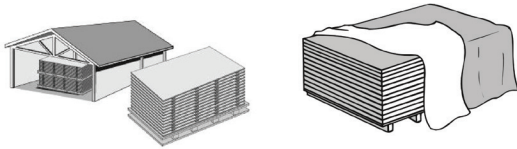
ARCHITECTURAL

Textured fiber cement board systems, which allows to obtain walls or ceilings with the appearance of wooden slats.

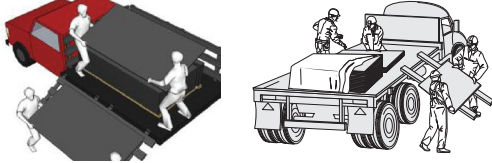
TRANSPORTATION, STORAGE, AND HANDLING

Always store the boards indoors in ventilated and dry areas; both in the commercial warehouse and on the construction site. Do not expose the panels to the outside (rain, sun or snow).

In flat surfaces, stack them on pieces of wood (do not leave them directly on the ground). If you leave them temporarily outside, you must cover the pallet with a waterproof mantle.



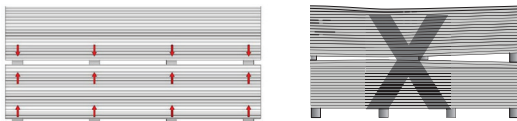
Plycem Slotted boards must be loaded by at least 2 people. Transport the covered panels with a waterproof mantle, preventing them from getting wet on the trip to the commercial warehouse or the construction site.



Always handle the boards on their edges, avoiding deflections in a horizontal position.



Always stack the boards in the correct position on aligned supports. Avoid deformation during stacking. Do not stack more than 3 pallets one on top of the other.



SYSTEM COMPONENTS

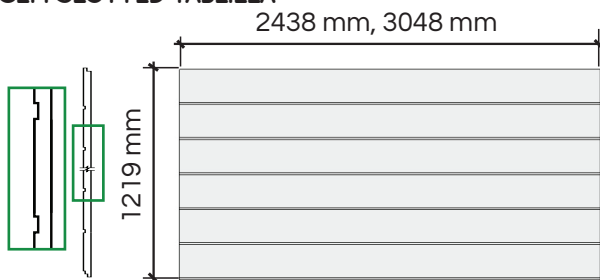
Plycem Slotted system is composed of boards and their complements, which constitute the construction system.

Plycem Slotted board

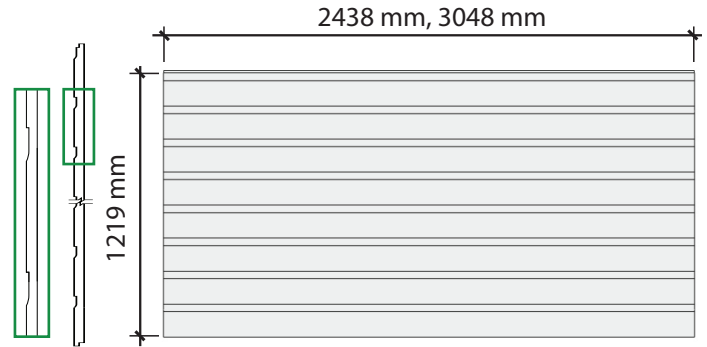
Plycem Slotted panels are made from cellulosic fibers reinforced with cement, have a smooth or wooden finish. They are 8mm (indoors) and 11mm, 14mm, 17mm (outdoors) thickness, 1219mm wide, 2438mm and 3048mm long (ask for minimum production quantity and available stock).

For Slotted technical data sheets please visit www.plycem.com.

PLYCEM SLOTTED TABLILLA



PLYCEM SLOTTED CAMPESTRE



Check availability of stock.

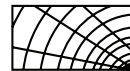
Structure for wall



Track 32x100 mm 20 GA (min.) Outdoors
Track 32x100 mm 24 GA (min.) Indoors

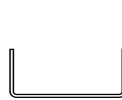


Stud 50x100 mm 20 GA (min.) Outdoors
Stud 50x100 mm 24 GA (min.) Indoors

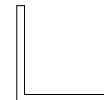


50x100mm piece of semi-hard wood.

Structure of ceilings



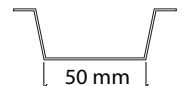
U Channel



Angle 24 Ga
25.4x25.4 mm



Furring Channel
or Omega profile.
24 Ga. (min.)



Furring Channel
or Omega
profile.
24 Ga. (min.)



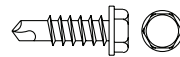
25.4x50 mm semi-hard wood.

Fastenings



LH 8-050 SCREW (structure)

Joint between stud and track furring channel-angle of ceiling.



MM10-075 SCREW (structure)

Structural joints in corners, intersections and connections, furring channel to U-channel fastening.



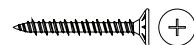
PH8-125, PH8-150 SCREW (Plycem on steel)

Fastening of Plycem Slotted to metal structure 20Ga.



PL 8-175 SCREW (Plycem on wood)

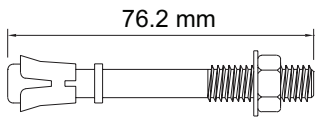
Fastening of Plycem Slotted to wood structure.



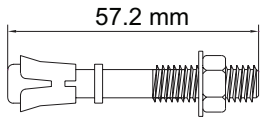
PL 6-100 SCREW

Fastening to wood or metal structure 24 Ga.

FLOOR FASTENING



EXPANSION ANCHOR
76.5mm (3")

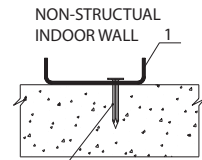
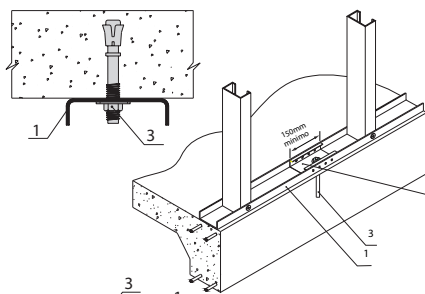


EXPANSION ANCHOR
50mm (2") x Ø 6mm (1/4")

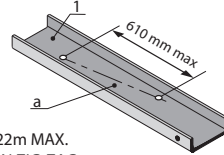


STEEL POWDER ACTUATED
DRIVE PIN 25.4 mm (1")

STRUCTURAL OUTDOOR WALL



Section of stud used as a load distribution element (minimum 150mm)



1. ANCHOR PROFILE (TRACK)
 2. NAIL FOR CEMENT
 3. EXPANSION ANCHORAGE AT 1.22m MAX.
- a. ALTERNATE THE ANCHORAGE ON ZIG-ZAG ON THE PROFILE

TOOLS



SCREW DRIVER



CIRCULAR SAW WITH
DIAMOND BLADE



HAMMER



PHILLIPS- TYPE TIP



AVIATION -TYPE SNIPS



LEVEL STRING ROPE
CONSTRUCTION
LEVEL

FINISHING PRODUCTS



PAINT



FILLER

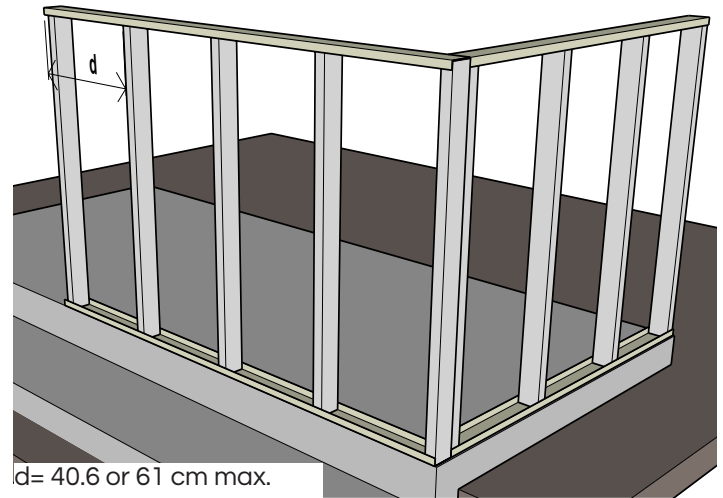


POLYURETHANE
SIKAFLEX 15 LM OR THE LIKE

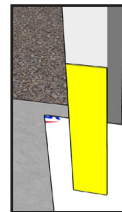
INSTALLATION INSTRUCTIONS

The metal frame will be 24 Ga (indoor wall) or 20 Ga (outdoor wall), with a maximum space of 610mm. A moisture barrier Building Wrap, will be installed on the structures of outdoor walls. Boards will be fixed with the longest edge parallel to the studs, using PLYCEM self-tapping screws. The spacing between screws is 200mm. The attachments will be placed in accordance to fastening schedule.

Structure to place panels vertically



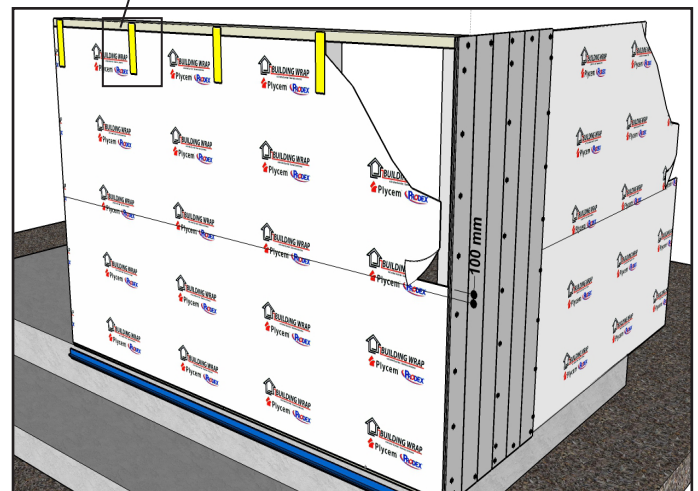
d= 40.6 or 61 cm max.



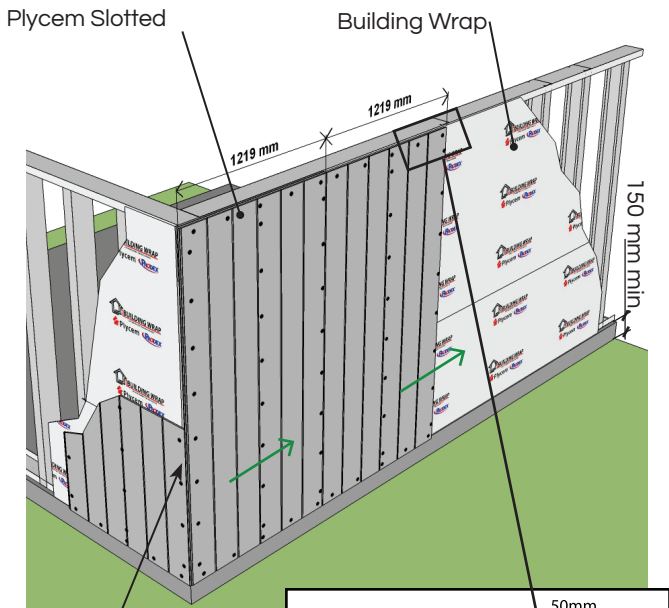
Adhesive tape or flat screw (temporary)



Adhesive tape



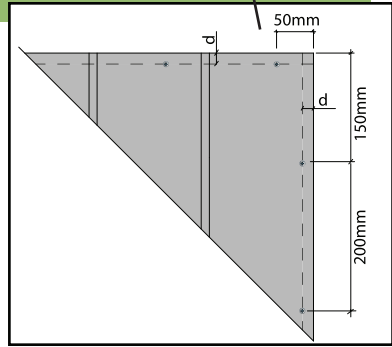
Use Building Wrap on exterior walls only.



Fastenings at 200 mm o.c. maximum

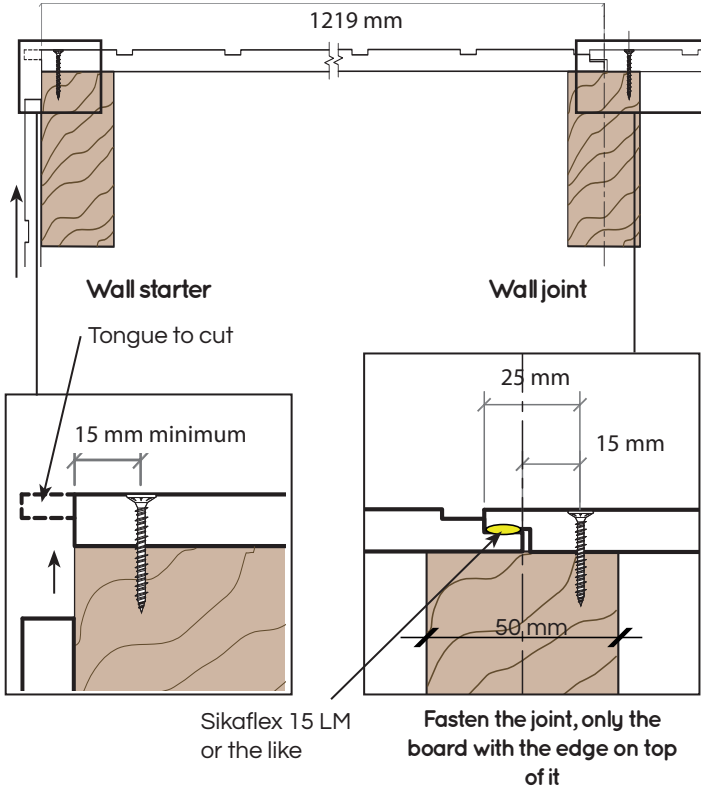
Fastening the board: Start at the bottom edge and continue from left to right.

d = 15 mm min. (see fastening details about joints)

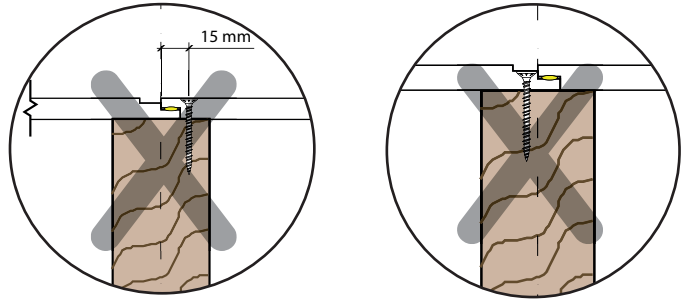


Vertical Joints

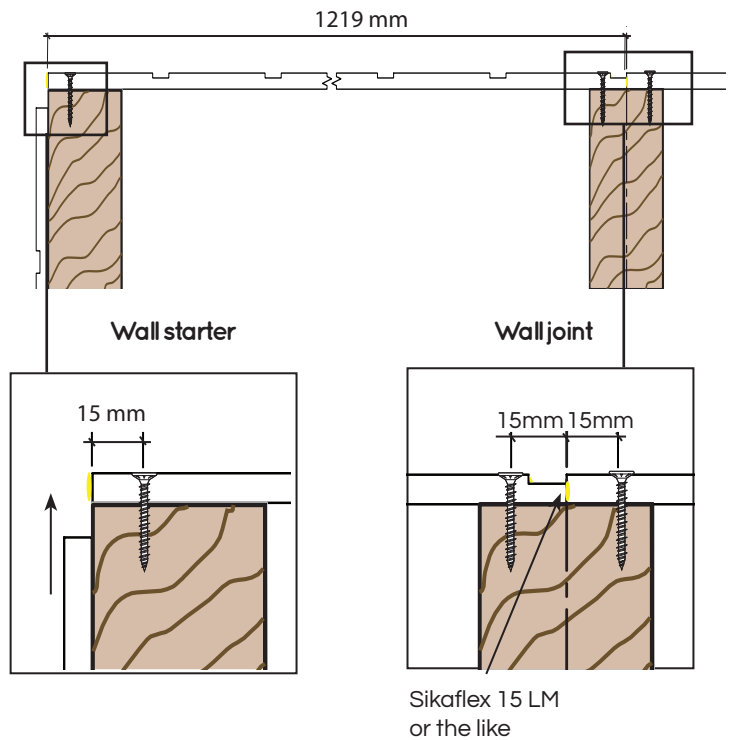
Fastening on Plycem Slotted 11mm, 14mm and 17mm



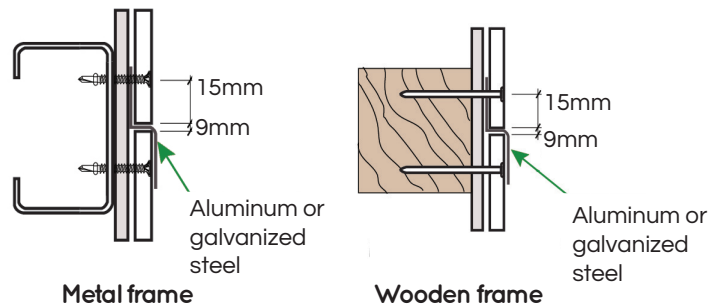
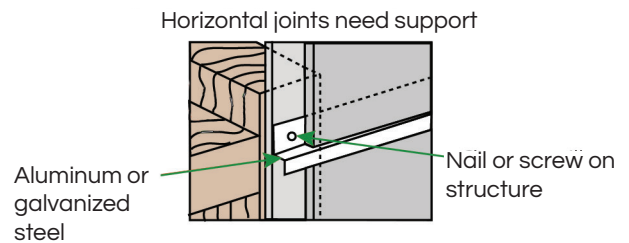
WRONG INSTALLATION



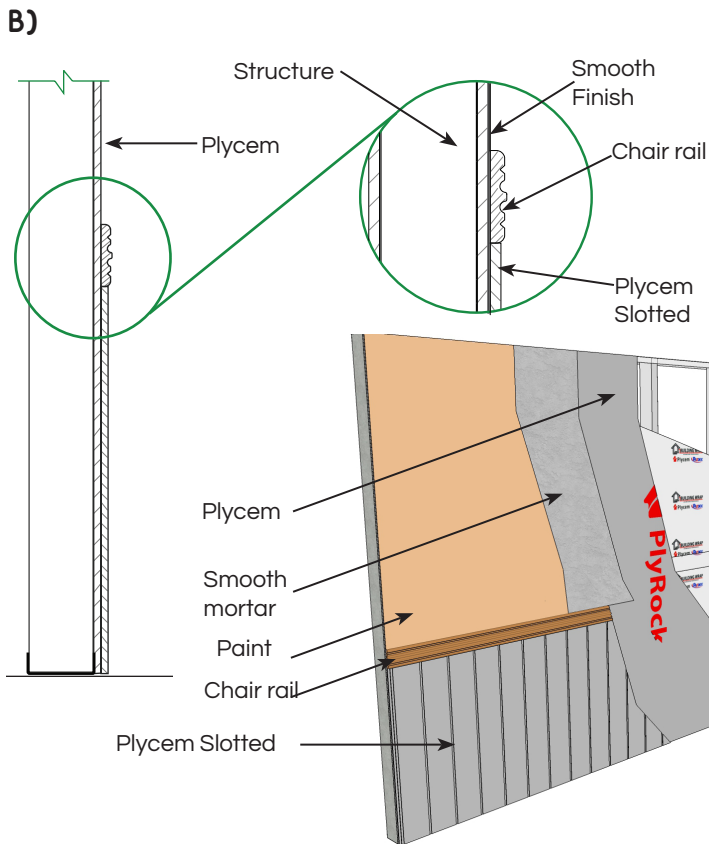
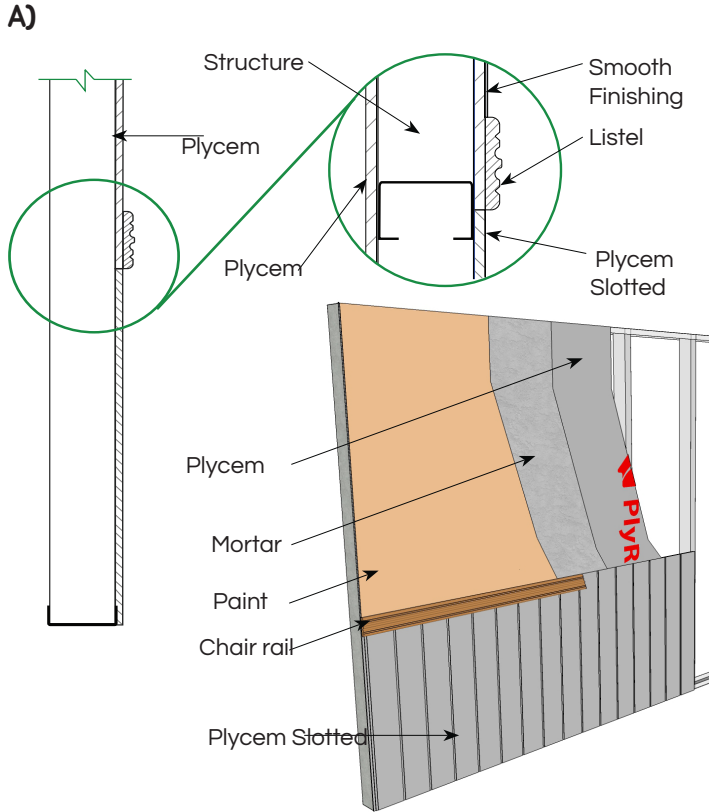
Fastening on Plycem Slotted 8mm



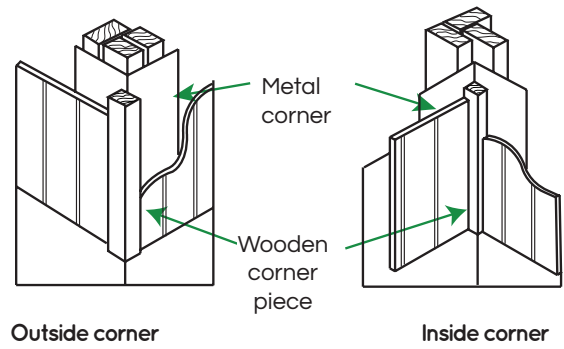
Treatment of exterior horizontal joints



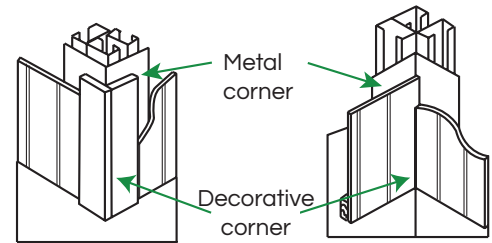
Texture combination details



Corner with wooden structure

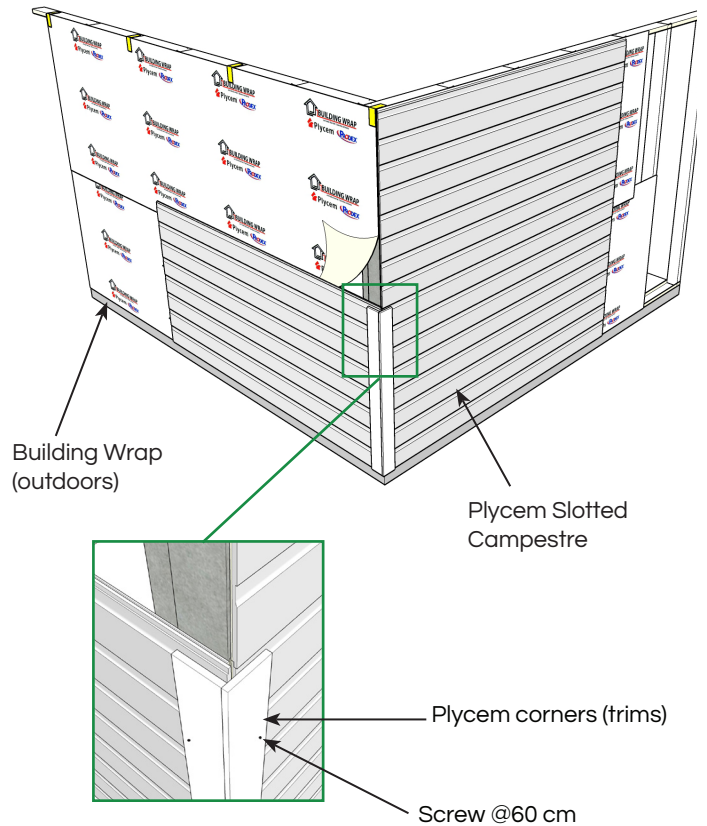


Corner with metal structure

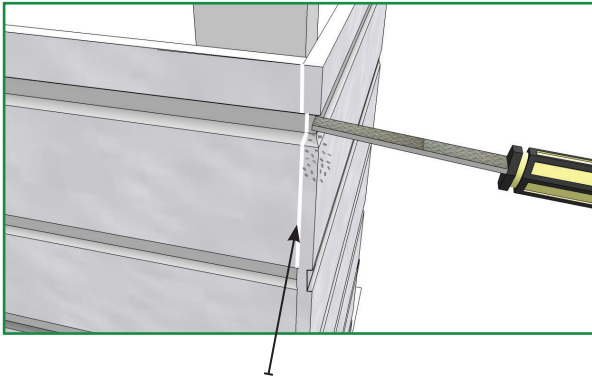


Horizontal placement of panels (Rustic Plycem Slotted)

1- Fiber cement corner

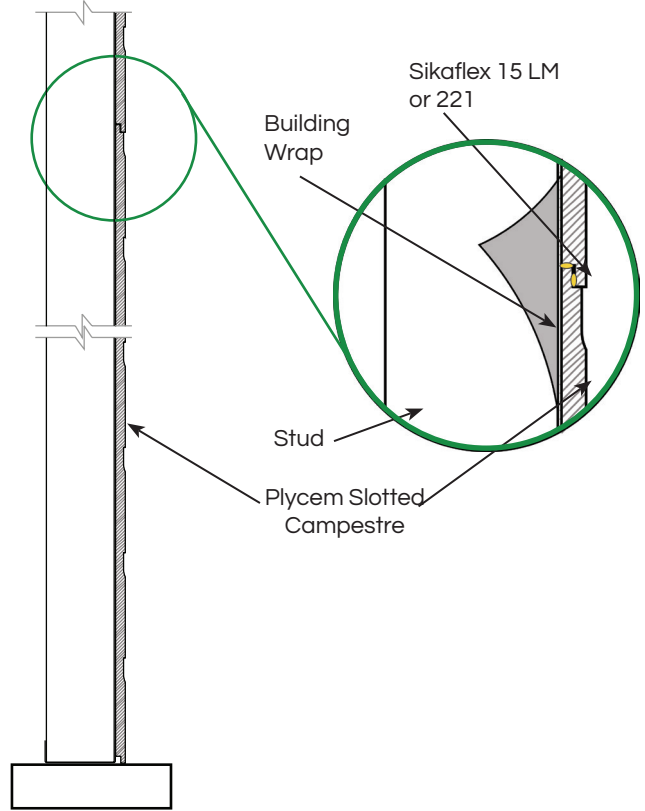
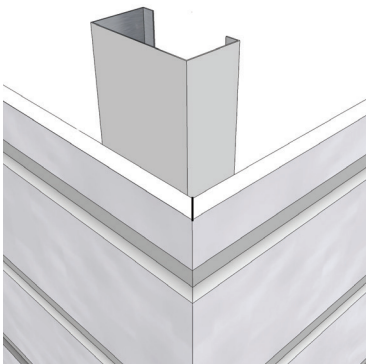
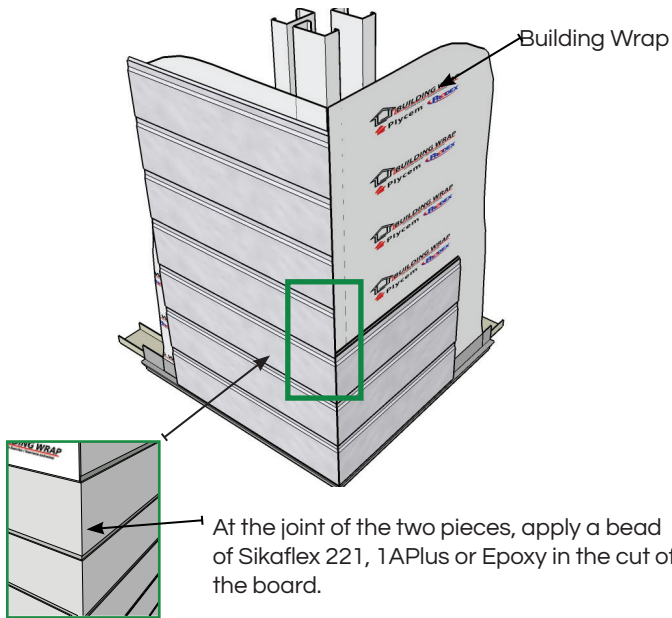


2- Butt joint with roughing



Apply a bead of Sikaflex 221 or Epoxy at the joint of the two boards. After drying, roughen with a rasp.

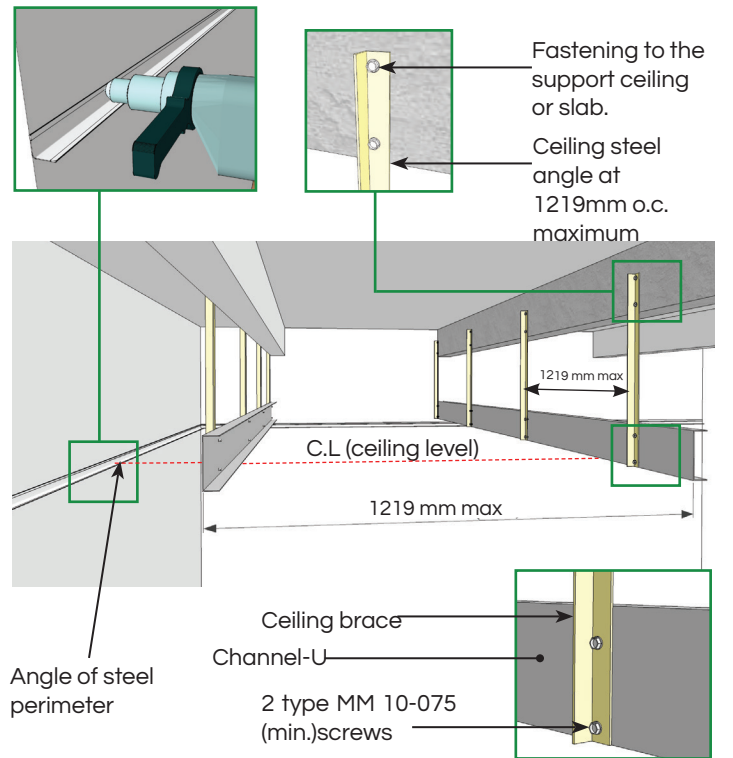
3- Butt joint (45° Cutting)



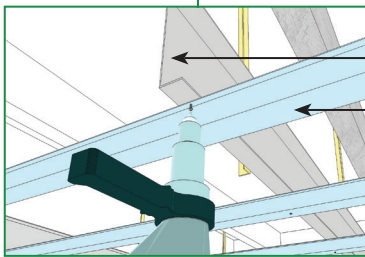
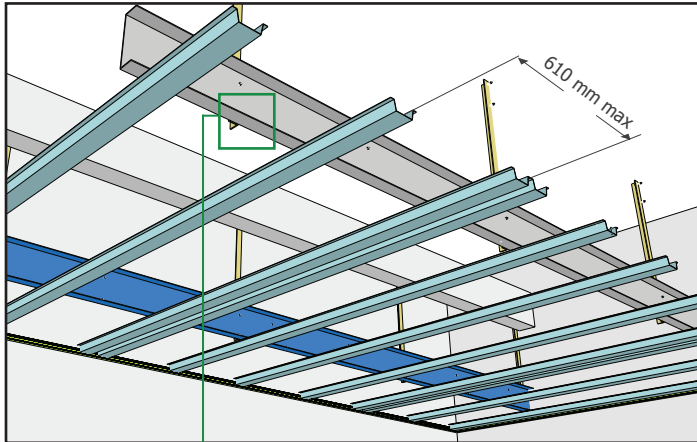
INSTALLATION INSTRUCTIONS ON CEILINGS

1- Ceilings with hidden structure.

Once the ceiling level is defined, the perimeter angle is placed and the U-channel profiles are installed to support the omega or furring channel template. The U-channels are suspended @122cm o.c maximum with wires or suspenders of the same ceiling angle.

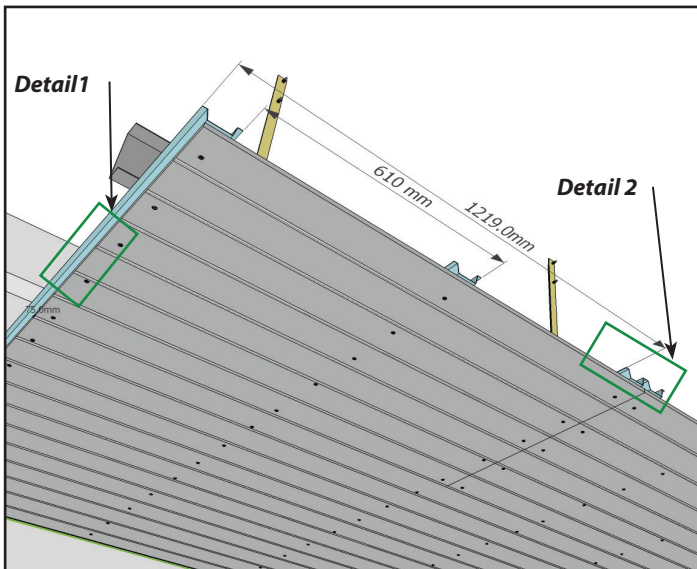


Once the Channel-U is in place, install the furring channel every 61 cm maximum where the Plycem ceiling is fastened. These profiles must be a minimum of 24 gauge.



Channel-U
Furring Channel @ 610 mm o.c max. (24Ga)

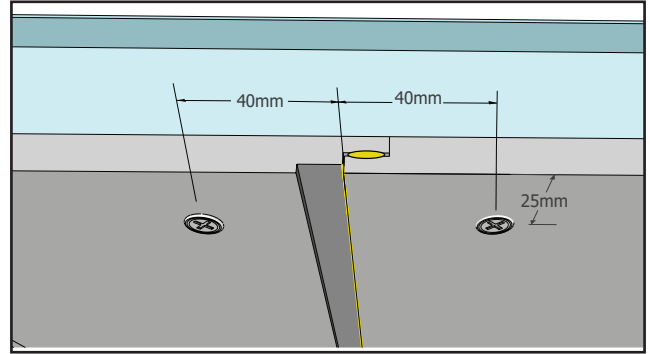
Plycem Slotted are fastened to the structure with PL6-100 screws.



Stagger the transverse joint of the Plycem Slotted to avoid a continuous joint. This joint should be leave exposed or treated with a ceiling joint cover.

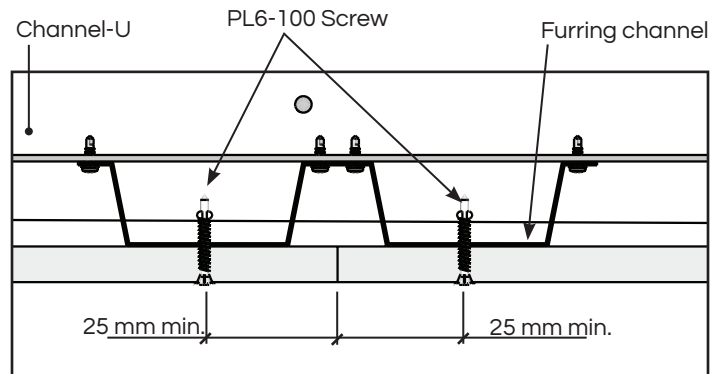
Detail 1 (Longitudinal joint)

Fasten the ceiling on the long side with a screw at least 40mm from the edge and 200 mm from each other. Use PL6-100 screw..



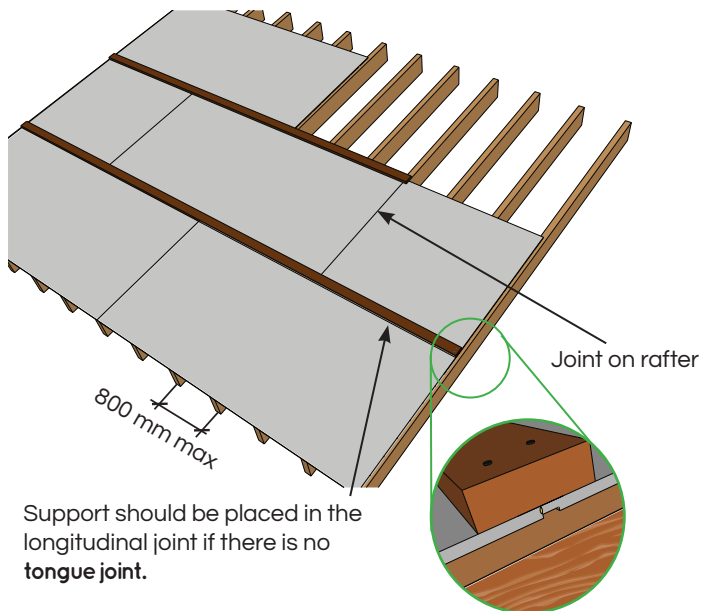
Detail 2 (Transverse joint)

Fastening of the joint on the short side of Plycem ceiling at double furring profile with PL6-100 screws on the joint.

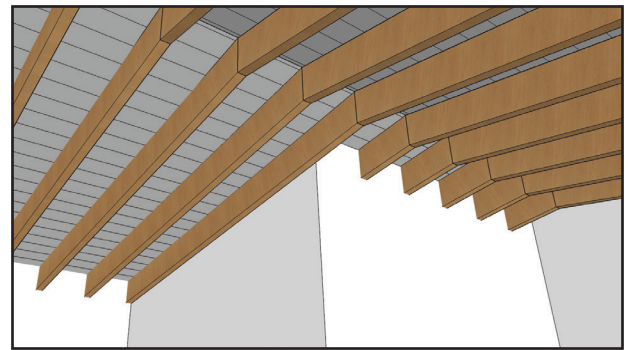
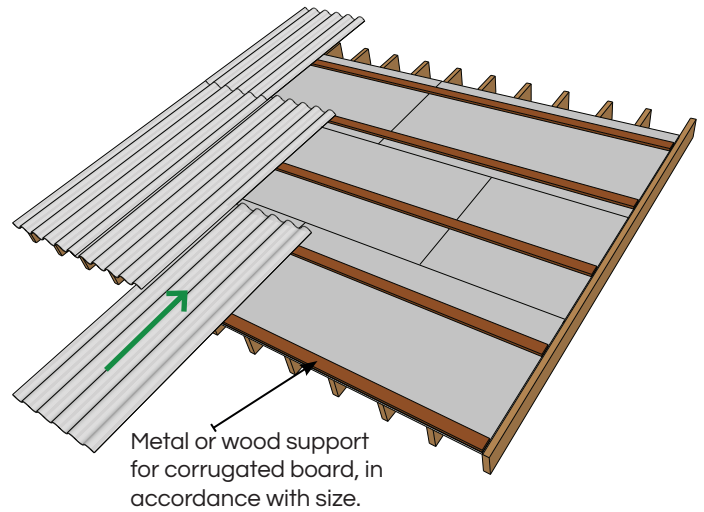
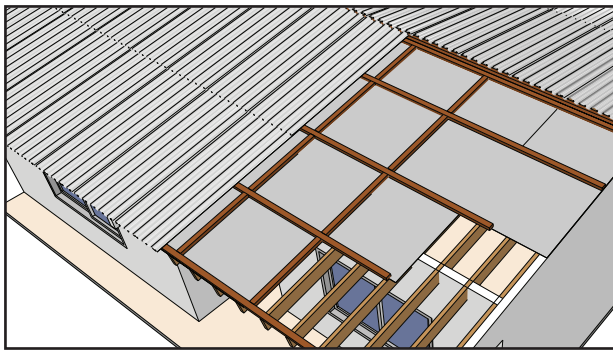
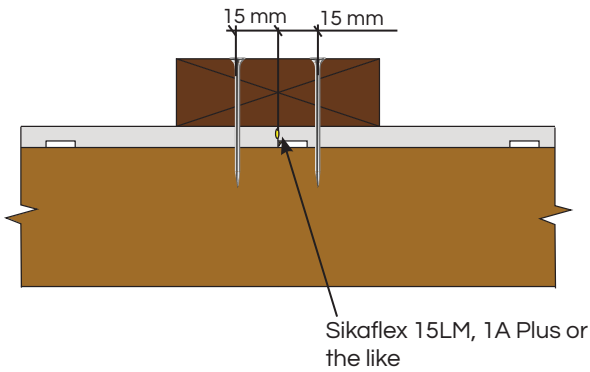


2- Ceilings with exposed structure (coffered ceiling)

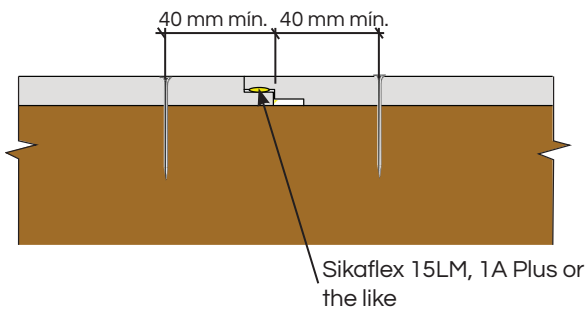
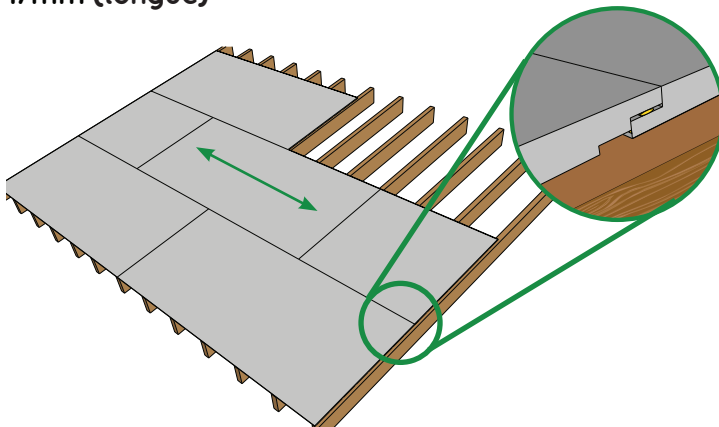
Longitudinal joint in Plycem Slotted 8 mm (straight edge)



Support should be placed in the longitudinal joint if there is no tongue joint.



Longitudinal joint in Plycem Slotted 11 mm, 14mm and 17mm (tongue)



Note: On Plycem Slotted grooved panels it is suggested to seal the joints with Sikaflex 15LM, 1A Plus.

PAINT



Use a quality 100% high acrylic latex paint or coating and always follow the manufacturer's instructions. To finish the Plycem Slotted system and always follow the manufacturer's instructions. Paint all areas that have been cut.

This product application in accordance with INTE/ISO 8336:2018 (Category A, Class 1)

TOLERANCE mm			APPARENT DENSITY
LENGHT	WIDTH	THICKNESS	
± 1	± 1	± 0.6	1.1 g/cm ³

Recommendations and instructions given in this manual are an adequate guide for using and handling the product. This guide does not replace the responsibility of the responsible engineer, the structural engineer, or the supervisor of each project where the product is used. For projects where special measures or conditions are requested, the product will fit the plans and the design provided by the client, assigned constructor, or engineer. Installation instructions provided by the client will apply. PLYCEM does not assume any responsibility for misuse of the product, incorrect handling, or use of materials different from the complementary materials recommended. PLYCEM does not help in the installation and management of the structural design. Therefore, this manual does not represent a co-responsibility in this regards, and its responsibility will be exclusively limited to the material.



Find us in:

www.plycem.com

contactoplycem@elementia.com



/Experto Plycem

Manufactured by:

PLYCEM Construsistemas Costa Rica S.A.



PLYCEM Construsistemas El Salvador S.A.

